

HEARTS

Romanticism in Contemporary Art

MUSÉE DE
LA VIE ROMANTIQUE

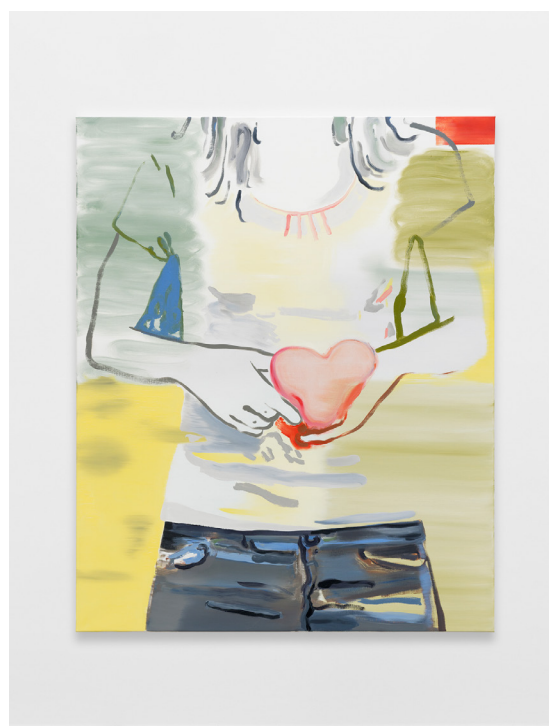
EXHIBITION
FROM FEBRUARY 14
TO JULY 12, 2020

INFORMATION
museevieromantique.paris.fr

PRESS PRIVATE VIEW: THURSDAY, FEBRUARY 14, 2020 FROM 9:30 AM TO 1:00 PM



↑ Jim Dine, *Irène...*, 1993. Oil and enamel on canvas, 213.4 × 137.2 cm. Photo: Bertrand Huet Tutti. Courtesy Templon, Paris - Brussels



↑ Françoise Petrovitch, *Untitled*, 2018, painting © Galerie Semiose, Paris

Le Musée de la Vie romantique presents an unexpected selection of 40 art works by thirty contemporary artists on the representation of heart as an expression of the feeling of love, echoing one of the main themes of Romanticism.

This exhibition aims to open the cultural program of the museum beyond the nineteenth century by exploring the continuation of Romanticism in contemporary art, in resonance with the museum's collections. Like Romantic writers and painters who put the passions of the heart at the core of their creation, the exhibition takes visitors on an aesthetic discovery of the heart and its representation.

The heart as an organ, motif and symbol is presented here through various techniques: painting, drawing, sculpture, ceramics, neon and photography. Some artists illustrate their feelings and interior torment in harmony with nineteenth-century Romanticism. Others use the motif as an aesthetic form and invite humanistic thinking by opening the horizons of feeling toward dreams, the ideal and the sublime.

PRESS CONTACT

Pierre Laporte Communication

Samira CHABRI

samira@pierre-laporte.com

+33 (0)1 70 08 15 70 / +33 (0)6 42 82 49 15

Musée de la Vie romantique

Catherine SOREL

presse.museevieromantique@paris.fr

+33 (0)1 71 19 24 06



CŒURS



↑ Pierre and Gilles, *40 years – Self-portrait*, 2016. Photograph printed by inkjet on canvas and painted, 123.5 x 102 cm. One-of-a-kind print. Photo: Pierre & Gilles. Courtesy Templon, Paris - Brussels

MUSÉE DE LA VIE ROMANTIQUE

16 rue Chaptal, 75009 Paris

Open daily except on Mondays and on specific holidays.

Full rate €6 / Reduced rate €4
Free of charge for the permanent collections

Information and reservations:
Tel. : 01 55 31 95 67 - reservations.museevieromantique@paris.fr

Online ticket purchase:
www.billetterie-parismusees.paris.fr
www.museevieromantique.paris.fr

#ExpoCoeurs

Album (available only in French):
Cœurs. Du romantisme dans l'art contemporain
17 x 24.5 cm, softcover,
96 pages, 50 illustrations
€ 19.90

PRESS CONTACT

Pierre Laporte Communication
Samira CHABRI
samira@pierre-laporte.com
+33 (0)1 70 08 15 70
+33 (0)6 42 82 49 15

Musée de la Vie romantique
Catherine SOREL
presse.museevieromantique@paris.fr
+33 (0)1 71 19 24 06



↑ Annette Messenger, *Resting Heart*, 2009, wire, black netting, 43 x 100 x 17 cm, Antoine de Galbert Collection, Paris © Cloé Beaugrand

In addition to the emblematic figures of Niki de Saint Phalle, Jim Dine, Annette Messenger, Sophie Calle, Pierre and Gilles, Jean-Michel Othoniel and Françoise Pérovitch, visitors will be able to discover about twenty other artists in this exhibition.

The visit is structured around seven sections offering a narration on love and continues throughout the museum and garden, inviting visitors to appreciate the permanent collection from a sensitive and poetic perspective. The concept of the visit is to make visitors experiment the various feelings of love by mentioning the major themes of seduction, love at first sight, declaration of love, eroticism, breakup, mourning and everlasting love. Miniatures, drawings and precious objects next to more spectacular formats mixing a naturalistic approach and idealistic vision illustrate this popular design, its symbolic meaning and its aesthetic adoption in today's art.

This exhibition will open on Valentine's Day, with an exceptional day of free entrance for all art, music and poetry lovers. A rich cultural program, activities and tools facilitating the understanding — as a photo booth, a visit for kids, guided tours and workshops—will make the visitors' heart pound at le musée de la Vie romantique.

CURATORS

Gaëlle Rio, Director, musée de la Vie romantique
Maribel Nadal Jové, Guest Curator

ARTISTS PRESENTED

Martine Aballéa, Pilar Albarracín, John M. Armleder, Gilles Barbier, Ronda Bautista, Sophie Calle, Hsia-Fei Chang, Delphine Coindet, Jim Dine, Jacques Halbert, Oda Jaune, Ouka Leele, Philippe Mayaux, Annette Messenger, Marc Molk, Mrzyk & Moriceau, Claude Nori, Vincent Olinet, Jorge Orta, Jean-Michel Othoniel, Françoise Pérovitch, Pierre et Gilles, Sarah Pucci, Agatha Ruiz de la Prada, Niki de Saint Phalle, Ida Tursic and Wilfried Mille, Luise Unger, Winshluss.